



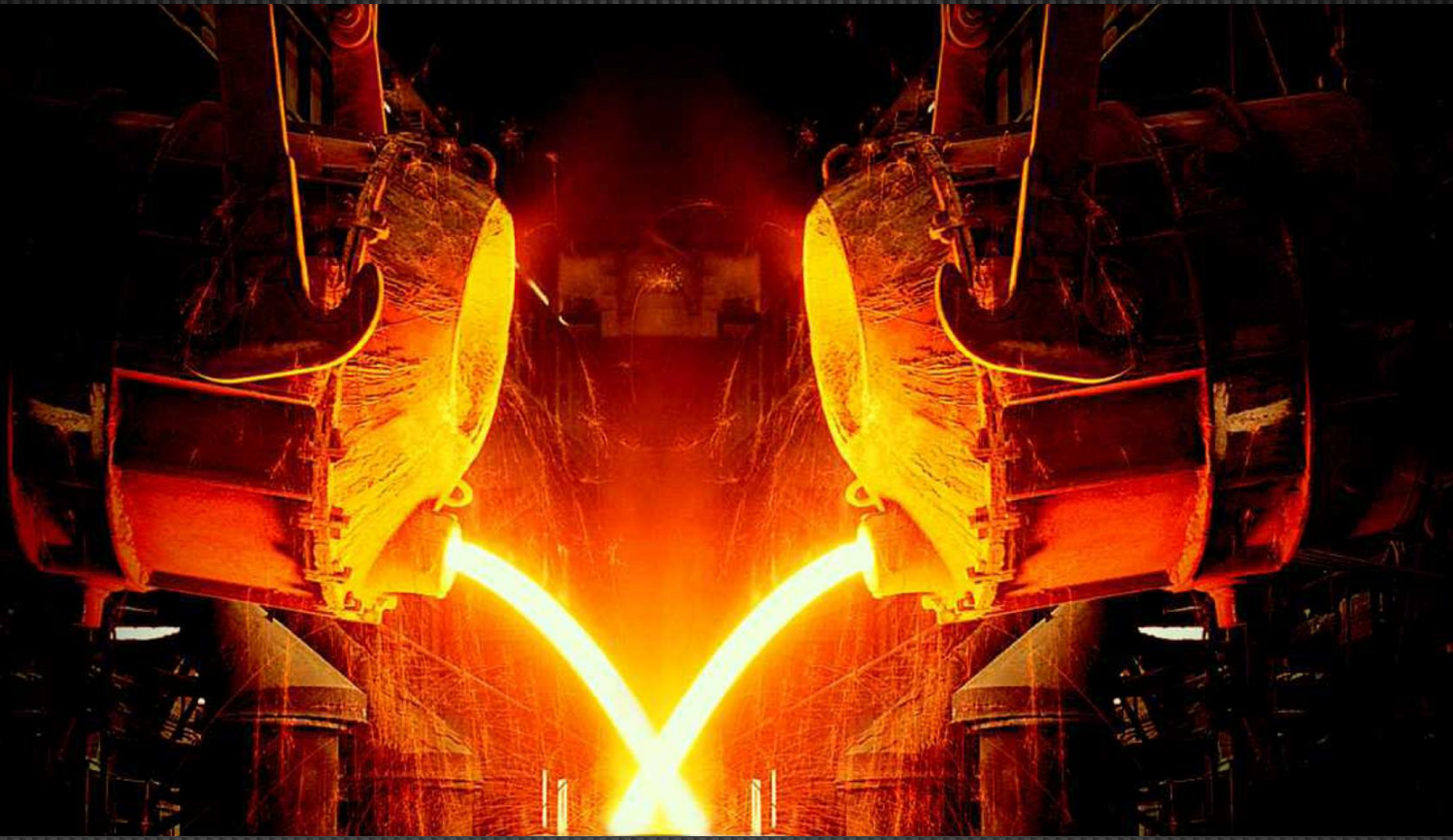
YESHWANT

PRECISION PULLEYS
& CASTINGS



YESHWANT CASTINGS

PRECISION PULLEYS

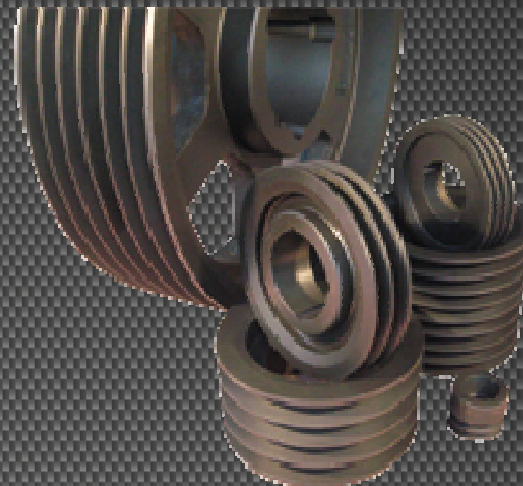


Gateway to all types of pulleys.

Yeshwant Precision Pulleys & Yeshwant Castings are an ISO 9001:2008 International Standard Companies manufacturing Standard V grooved Pulleys, Taper Lock Pulleys, Taper Lock Bushes & Machined Castings since four decades.

Our high Quality standard remain our strength which helps in serving various industries & machinery manufactures such as,

- ▣ Construction Machinery.
- ▣ Agricultural Machinery.
- ▣ Textile Machinery.
- ▣ Automobile.



YESHWANT CASTINGS

PRECISION PULLEYS

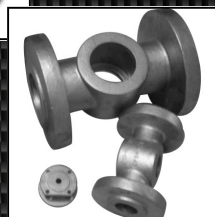
WE PRODUCE

- S. G. Iron (Ductile iron castings)
- Cast Iron all grades



PRODUCTS

- Standard V Grooved Pulleys
- Taperlock Pulley & Bushes
- Other Castings



YESHWANT CASTINGS

PRECISION PULLEYS

FACILITIES

Melting

Dual track Induction furnace with two crucibles,
size 500 kg each, 350 KW panel.

Cupola 2.8 tons per hour

Pouring lines to handle liquid metal



Sand Plant

Conveyor System

Elevator System

Over Head Magnetic Separator

Magnetic Pulley

Sand Sieves

Sand Cooler

Sand Storage Hopper

Intensive Mixer

Green sand storage hopper



Molding

Sand Muller Capacity 250 Kg

Core sand super mixture capacity 150 Kg

Pneumatic rammer

Pneumatic jolt squeeze molding machine size 550x600

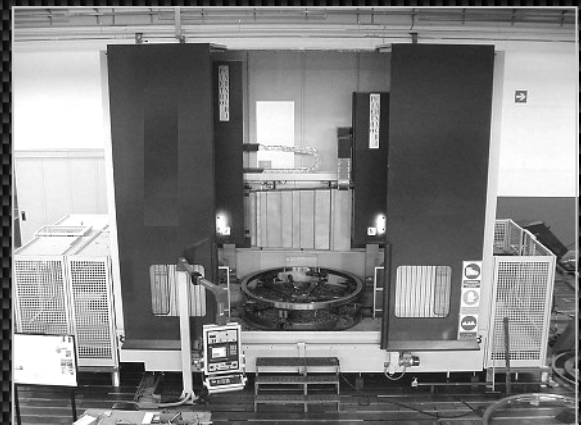
Shell core Facility

Molding Boxes 500x550x200/150/100

Molding Boxes 400x400x200/150/100

EOT Cranes 2 tons and 5 tons

Mechanized mold track line



Pouring

Ladle pre heating system

Bottom pouring ladle capacity 500 kg

Tea pot ladle Capacity 100kgs to 500 kg

Pouring ladles

YESHWANT CASTINGS

PRECISION PULLEYS

FACILITIES

Fettling

Knock out machine capacity 1000 kg
Swing Frame Grinders
Snagging Grinder
Pneumatic chippers
Shot blasting machine 48" double door
Air Shot Blasting for large pieces
Series of disc and pneumatic grinders



Testing Laboratory

22 channel Spectrometer
Carbon silicon analyzer
Metallurgical Microscope for structure analysis
All sand testing facility
Brinell hardness tester
Sand core hardness tester
Mold hardness tester



YESHWANT CASTINGS

PRECISION PULLEYS



MACHINING FACILITY

Sr. No.	Machine description	Qty.	Travel XYZ / ABC / Centre height
1	CNC milling	1	Travel X x Y x Z 4000 x 1000 x 1000
2	VMC	1	Travel X x Y x Z 1025 x 510 x 637 20 tools
3	HMC	1	Travel X x Y x Z 1200 x 600 x 700 24 tools
4	CNC Plasma cutting	1	Cutting capacity upto 50mm (4000 mm x 8000 mm)
5	Boring machine (Big)	1	Travel X x Y x Z 2000 x 2000 x 2000
6	Boring machine (Small)	1	Travel X x Y x Z 1000 x 1000 x 1000

YESHWANT CASTINGS

PRECISION PULLEYS

MACHINING FACILITY



Specifications of Machines			
Sr. No.	Machine description	Qty.	Travel XYZ / ABC / Centre height
7	Boring machine (Medium)	1	Travel X x Y x Z 1500 x 1000 x 900
8	Milling (Medium)	1	Travel X x Y x Z 1000 x 300 x 350 Table size:1600 x 320
9	Milling (Big)	1	Travel X x Y x Z 1100 x 320 x 380 Table size:1390 x 340
10	Milling (small)	1	Travel X x Y x Z 800 x 200 x 400 Table size:1390 x 340
11	Surface grinder	1	Travel X x Y x Z 800 x 400 x 400
12	Lathe big dia (Special for wheels)	1	Centre ht.- 600 mm
13	Lathe (General purpose)	1	Centre height -300 ABC--2500 mm
14	Radial drill 1	3	Throat depth 1000 mm (Drill capacity 50 mm)
15	Small Drilling Machine	1	Drill capacity 25 mm
16	Press Brk.	1	Capacity :12 mm thick x 3000 mm length
17	Shearing machine	1	Capacity:12 mm thick x 2500 mm length
18	Welding machines	2	400 Amps.
19	Welding machines	1	500 Amps.
20	CPI band saw	1	Capacity to cut 520 mm (round or square)
21	Lifter (Hydraulic stacker)	2	2 to 3 MT capacity
22	Conventional lathes	6	ABC 1 mtr and above

YESHWANT CASTINGS

PRECISION PULLEYS

PLANT TOUR



YESHWANT CASTINGS

PRECISION PULLEYS



Yeshwant Castings

Add: 703/1 Udyambag, Belgaum, 590008
Karnataka , India

Phone : +91-830-819-6263 (INDIA)

Phone : +91-831-2442130 (INDIA)

Phone : +1-201-696-9326 (USA)

Fax : +91-20-30266266



Email : support@yeshwantcastings.com

Web : <http://www.yeshwantcastings.com>

Marketing & Promotion By -



CRESCENDO WORLDWIDE